



Manual Wall Control

Made in USA

Model MWC

For Variable Position Damper Control

Installation Instructions

Improved Comfort

The MWC can adjust airflow from a ceiling diffuser to provide just the right amount of cooling and heating to eliminate overcooling and overheating in the work

Reduce Energy Usage


Reduce the airflow to a space when the space is vacant and higher swings in space temperature are allowed. The result is lower energy usage.

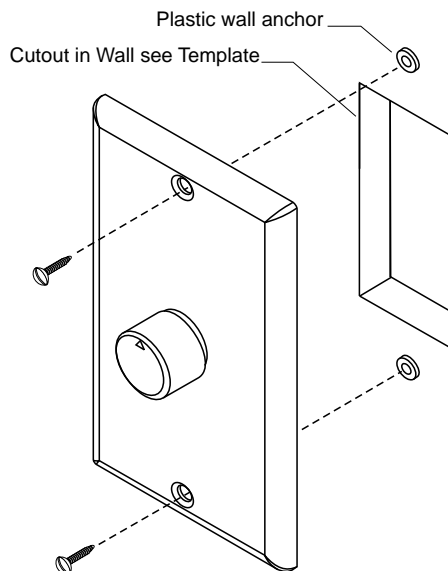


www.eControlsUSA.com

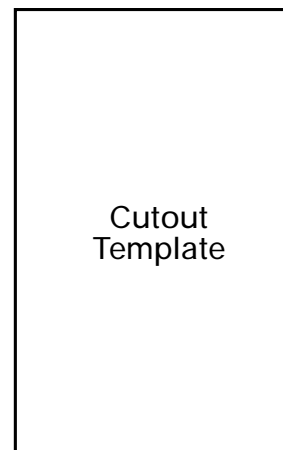
ECeControls

26945 Cabot Road, Bldg #101 / Laguna Hills, CA 92653 / 949-916-0945 Fax 949-458-8502

Place the template on the wall and mark the mounting holes and cutout corners with a sharp scribe. 

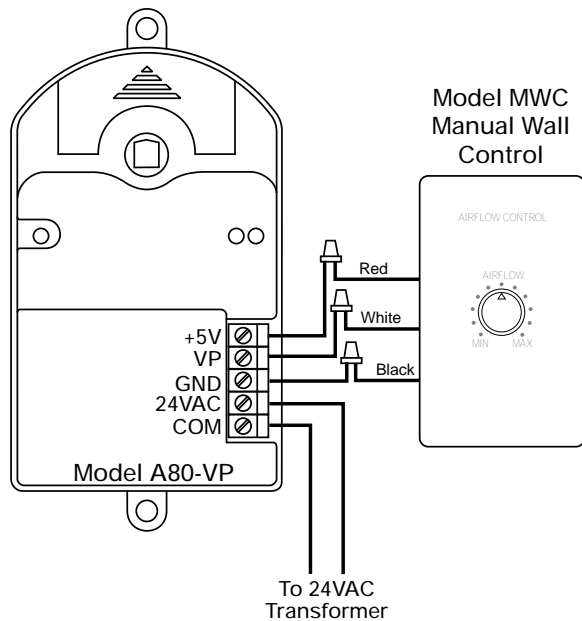


Installation Directly in a Wall



Wiring the Manual Wall Control

A VPD Damper and MWC Manual Wall Control are connected using the GND, VP and +5V terminals.



Wiring Using One MWC to Control Multiple VPD Dampers

A single Manual Wall Control can control multiple VPD dampers using the VP and GND terminals. Up to six VPD dampers can be controlled by one Manual Wall Control.

IMPORTANT! The +5V terminal on only the first damper is connected to the Manual Wall Control.

